

Oltre 1824

For swing gates with leaves up to 1.8 m and 100 kg

Concealed motor for swing gates.

24 Vdc irreversible electromechanical gear motor.

Minimum visual impact: the motor is small enough to be easily installed inside the profiles of the gate leaf or in very slim posts (with a minimum diameter of 55 mm).

Oz Kit

- Oz Kit 1**
- motor x 1
 - MC824L control unit x 1
 - receiver x 1
 - two channel remote x 2
- Oz Kit 2**
- motor x 2
 - MC824L control unit x 1
 - receiver x 1
 - two channel remote x 2

Easy to install: the bottom-up installation simplifies fixing of the motor inside the post.

Resistant: die-cast aluminium structure, IP67, resists the most severe weather conditions.

Quick and reliable: complete opening (90°) of the leaf in about 10 seconds. Oltre has been tested for use at 60 cycles/hour, making it suitable for all contexts with intensive use.

Safe: easy-to-use external manual release: the gate can always be opened manually, without having to take it apart.

Dedicated Moonclever MC824L control unit:

- easy to programme;
- automatic memorisation of limit switches on opening and closing with self-learning function;
- automatic fault diagnostics;
- programming of pause time;
- pedestrian pass door;
- deceleration on opening and closing;
- obstacle detection with dual technology;
- operation in event of power failure by means of optional rechargeable batteries (PS324);
- provision for connection of resistive sensitive edges.



COMMON ACCESSORIES



IT4WIFI
Smart Wi-fi interface to manage gates and garage doors by smartphone. (Not compatible with the Solemyo kit and battery backup.)
Pc./Pack 1



PS324
24 V battery with integrated battery charger.
Pc./Pack 1



PLA10
Vertical 12 V electric lock.
Pc./Pack 1



PLA11
Horizontal 12 V electric lock.
Pc./Pack 1



TS
Signboard.
Pc./Pack 1

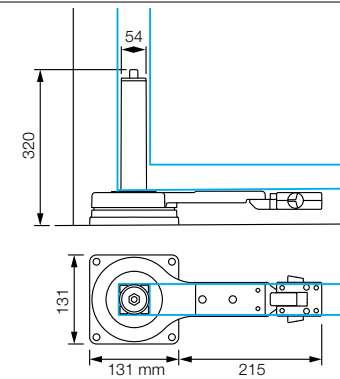


SOLEMYO KIT
The solar power to automate gates, garage doors or barrier gates.
See page 140.

TECHNICAL SPECIFICATIONS

Code	Description	Pack/Pallet
OLTRE1824	24 Vdc irreversible for installation on post or leaf profile, with release lever	20
Code		
		OLTRE1824
ELECTRICAL DATA		
Power supply (Vdc)	24	
Absorption (A)	1	
Power (W)	25	
PERFORMANCE DATA		
Speed (rpm)	1.5	
Torque (Nm)	150	
Work cycle (cycles/hour)	60	
DIMENSIONAL AND GENERAL DATA		
Protection level (IP)	67	
Working temp. (°C Min/Max)	-20 ÷ +50	
Dimensions (mm)	305x145x346 h	
Weight (kg)	5.5	

DIMENSIONS



COMPATIBILITY TABLE WITH CONTROL SYSTEMS AND ACCESSORIES

Code	control unit/receiver					transmitter				photocells								flashing light								
	MC200 / Built-in*	MC800 / OXI	DPR0500 / OXI-SMIXI*	A924 / FLOX2R*	MC224L / Built-in*	MC824H / OXI	MC824HR / OXI	MC824L / OXI	ERA INTI	ERA ONE	ERA FLOR	NICEWAY	EPS	EPM	EPL	EPSB	EPMB	EPLB	EPMOW	F210	F210	F210B	F210B	ELAC	ELDC	WLT
OLTRE1824						•	•	•	•	•	•					•	•	•	•						•	•

* Radio receiver incompatible with Opera system